

A Bioreaktor by Beloff & Borch 2014
- human + microbialfuelcell symbiosis



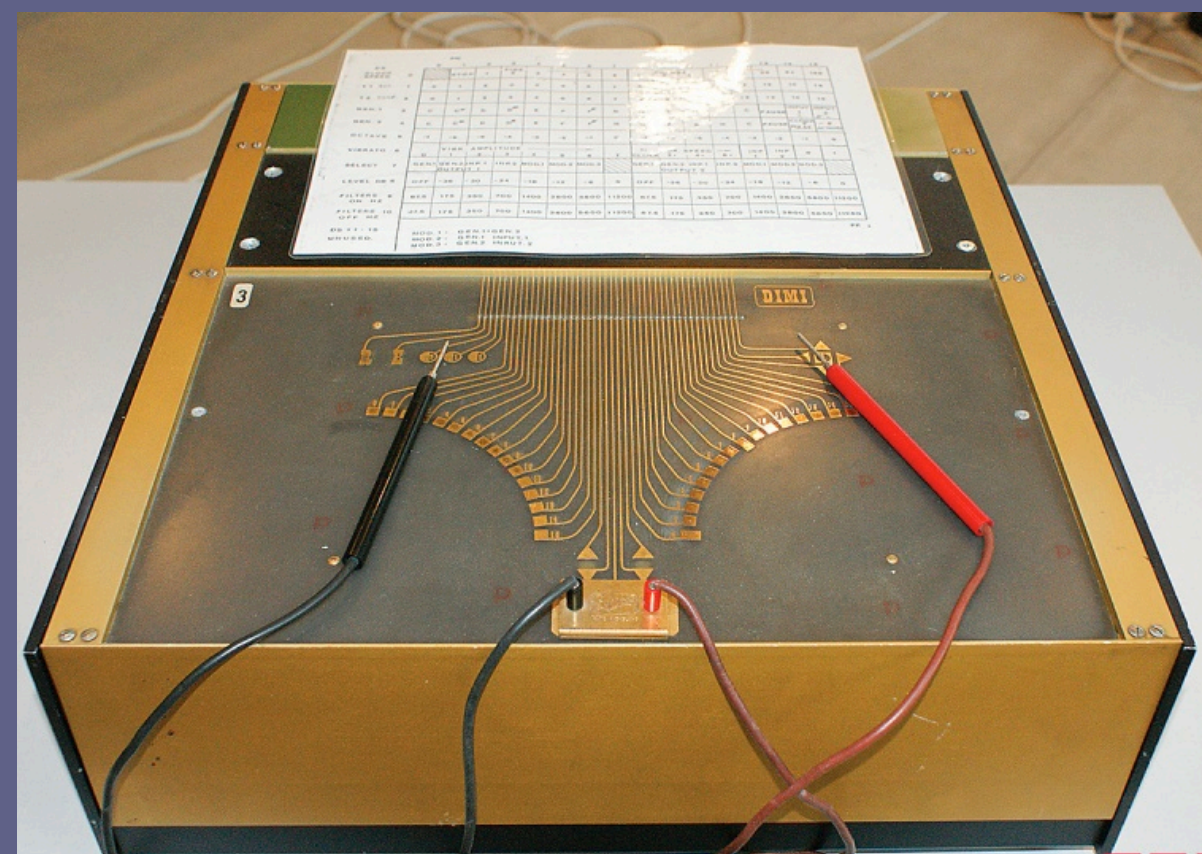
A Unit, 2012 by Beloff



Techno-Organic Practices in the Nordic Art

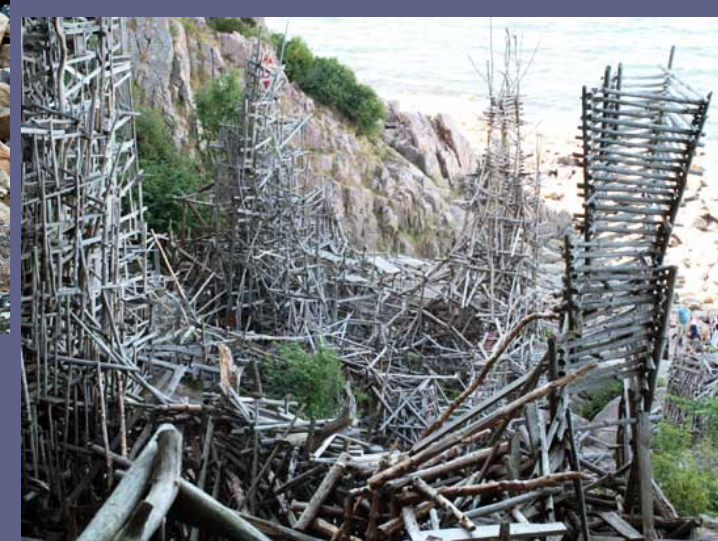


Joutsen (Swan) by Antero Kare 2006



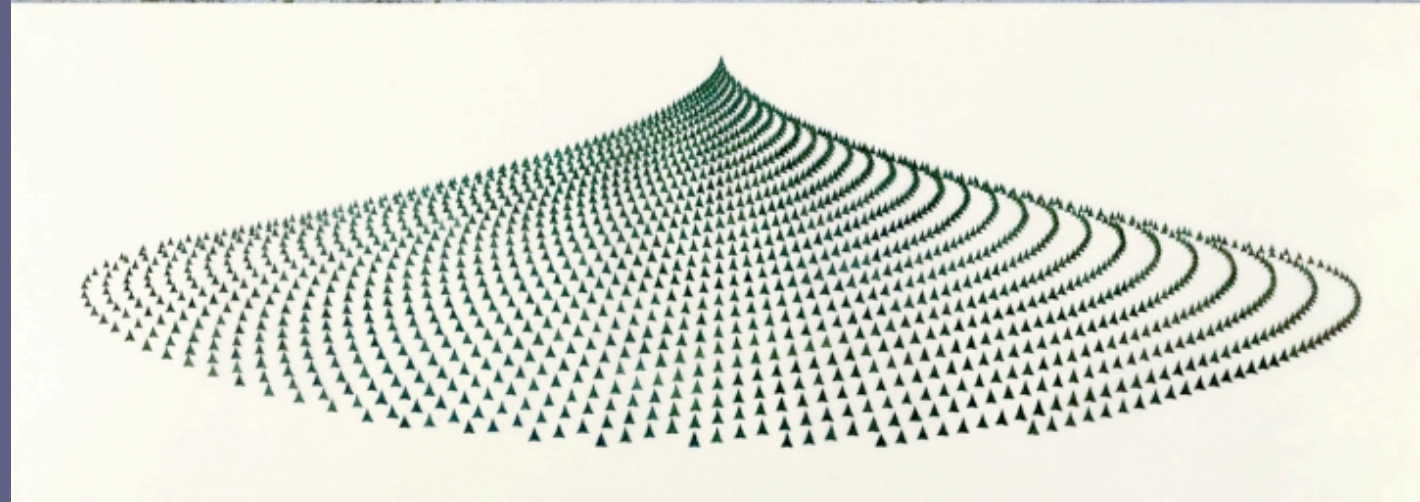
DIMI-A by Erkki Kurenniemi 1960's

I call *techno-organic practices* the developments in the arts that experiment and increasingly reshape the boundaries between the technological and the biological. This term allows one to think about single entities that are a conglomerate of hardware, software and wetware.



Nimis (in Ladonia) by Lars Vilks – evolving sculpture since 1980's

Agnes Denes, 1992-96
Tree Mountain
A Living Time Capsule –
11 000 trees, 11 000
people, 400 years



In 2013

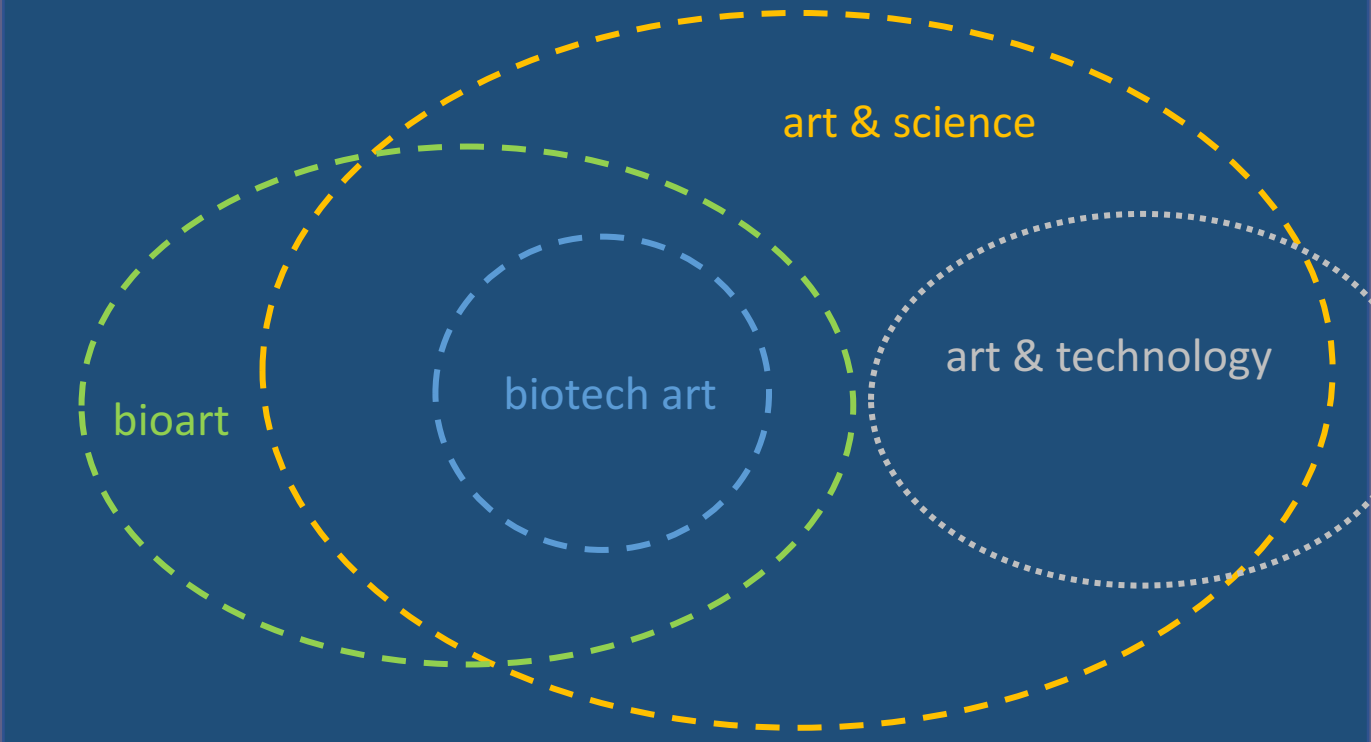
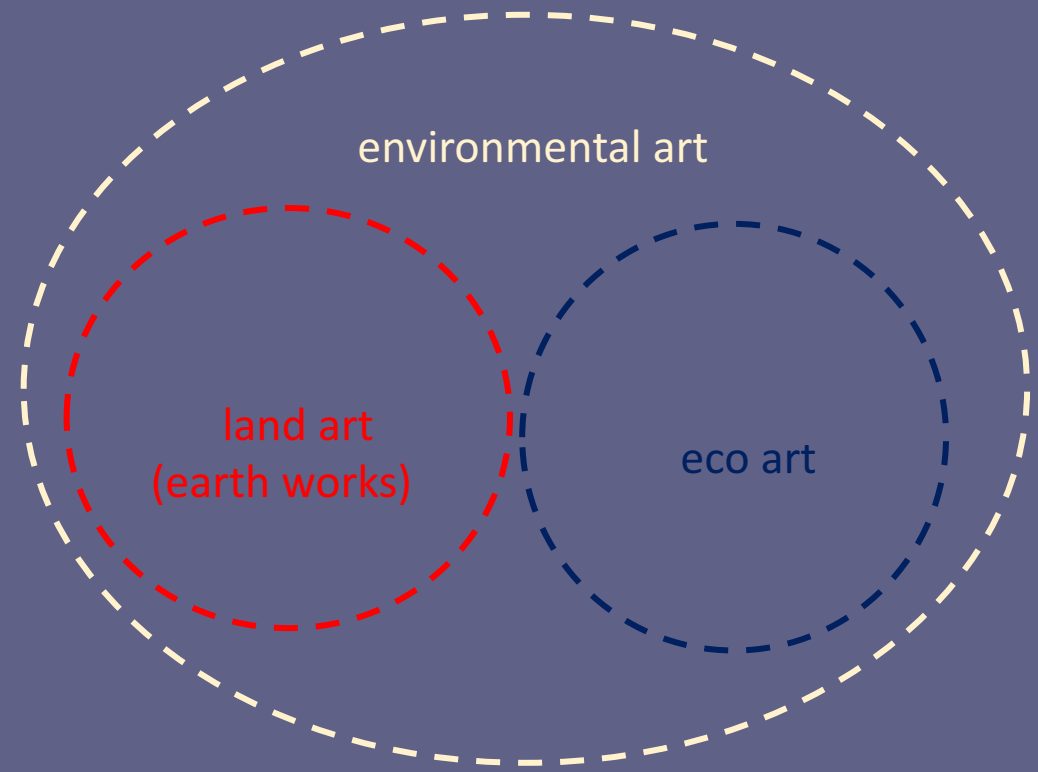




Agnes Denes, Tree Mountain 1996; Video by Margus Eimre, March 2017

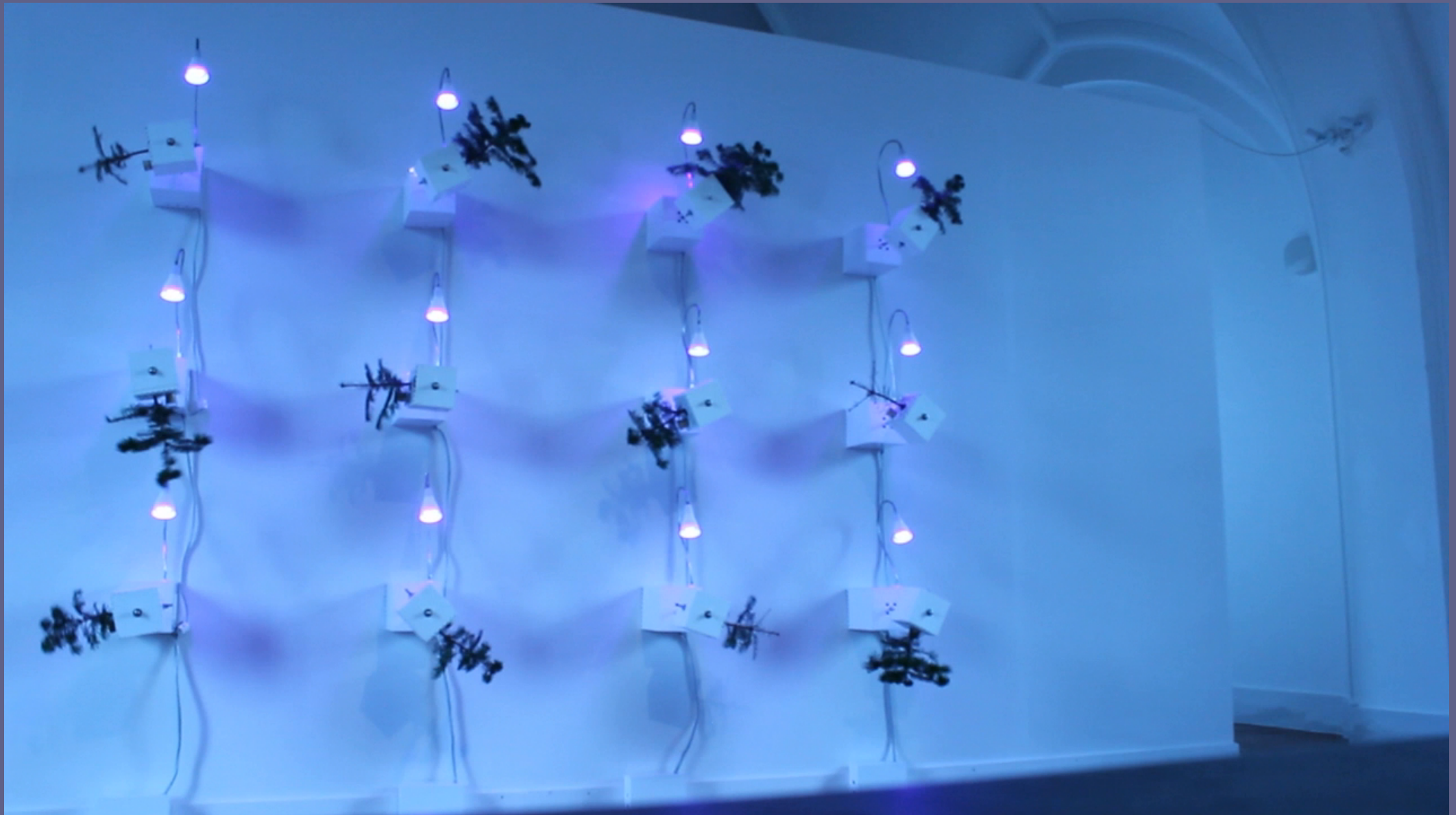
<https://www.youtube.com/watch?v=dTmGfXayIPA>

0:010 - 0:40





Antti Laitinen, Forest Square, 2013



Beloff & Jørgensen *The Condition* 2016

A technoscientific perspective has become a primary way to perceive, domesticate and also to reconstruct nature, often from a perspective that turns nature into a rational study or resource for economic gain.



Abies Nordmannia - on the field, Denmark

22. Caucasian Fir (*Abies nordmanniana*)

EUROPE 2 XfrogPlants

Tree, evergreen conifer
Shape: Broad conical
Origin: Eastern Europe, Turkey
Environment: Mountain forests, from 600 to 1,800 m.
Climate: Cool, cold

Notes:
The Caucasian Fir, differently from most similar conifers, does keep its lowest branches on even when old. This gives it a high decoration value and it's the reason why it is so often planted in parks and gardens. Its growth rate is slow. First discovered on the Caucasian mountains in the 19th Century.



Adult
25 m

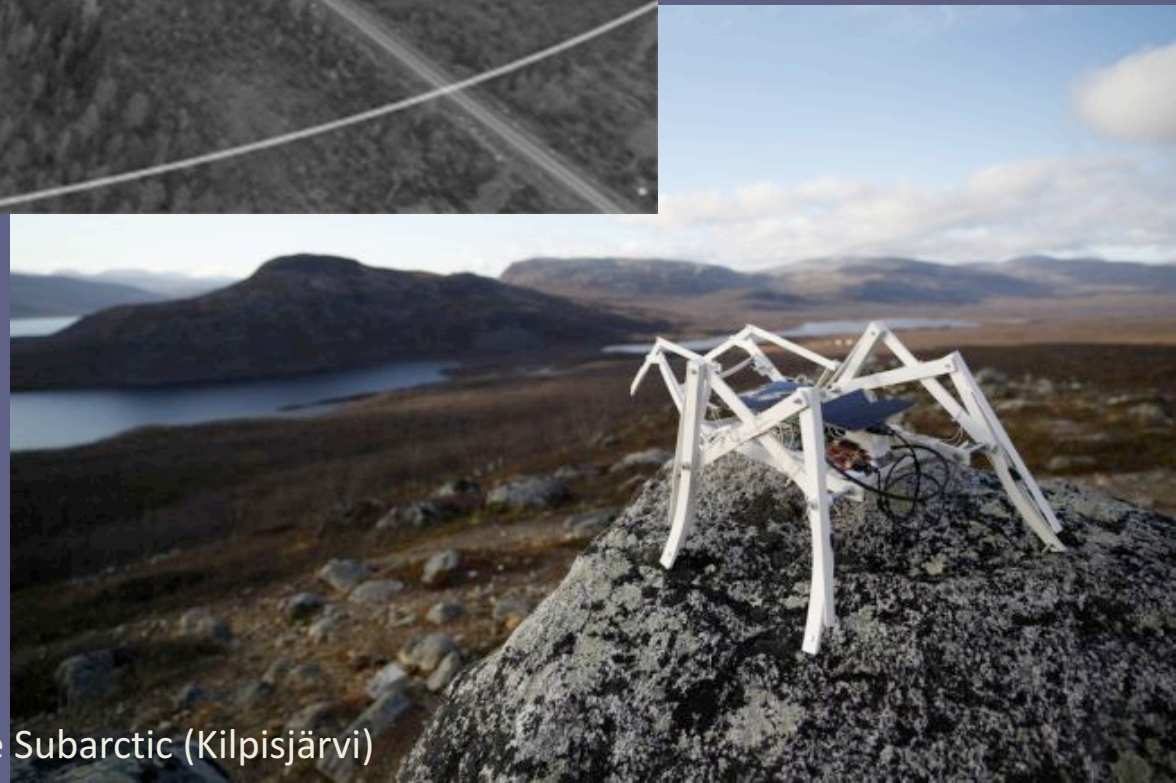




Yakutian Cattle project by Anu Osva, videoclip 2017



Antti Tenetz, 2015, Tracking (Jälestää)



Niki Passath 2011, A Robot As a Tourist in the Subarctic (Kilpisjärvi)

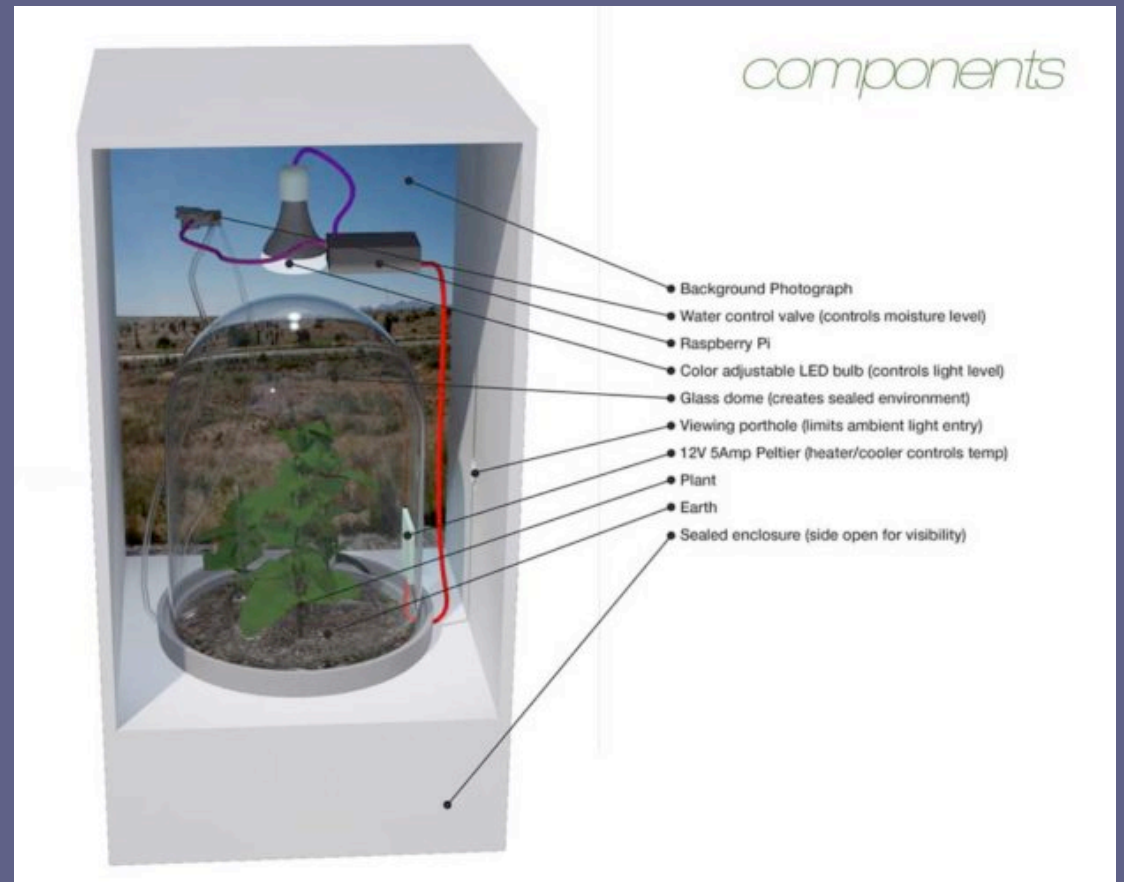


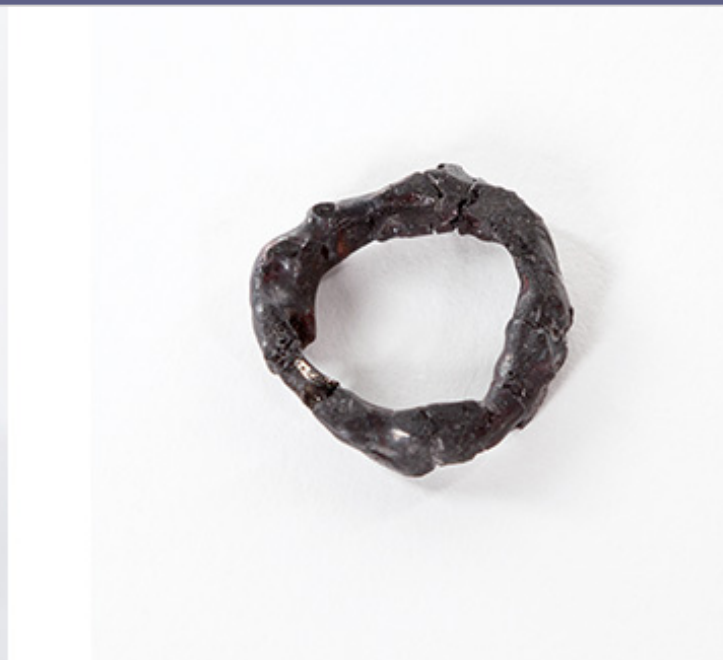
Aronia m. BaBe by Bartaku, 2009 > on-going



Transplant by Josh Miller and Wes Heiss, 2017

Plants will grow in warmed environments simulating the climate in Southern Sweden in 2050, 2110, and 2180





Cecilia Jönsson / The Iron Ring 2013

What kind of affinity towards natural environment is present in these types of art works?



THANK YOU!

LAURA BELOFF
IT University Copenhagen
lbel@itu.dk,
off@saunalahti.fi

The author wants to thank all the artists for keeping their images, which are used for these slides, available online. Accreditation of the use is considered to be under the 'academic use' licensing. Thank You.